

CORPORATE OFFICE

LAVIK ESTATES LIMITED

338 Avinashi Road 2nd Floor Peelamedu  
Coimbatore 641004 Tamil Nadu India

T + 91 422 4271100

E [info@lavikestates.com](mailto:info@lavikestates.com)

W [lavikestates.com](http://lavikestates.com)



LAVIK ESTATES

LAVIK SHANTHI

*Designing Lifestyles*





A large, light gray watermark of the Lavik Estates logo is centered in the background. It features a stylized 'L' and 'E' intertwined within a circular frame.

## EXPERTISE MEETS AMBITION

Lavik Shanthi is a joint venture between Lavik Estates & an Industrialist from Coimbatore. Lavik Estates aims to pioneer integrated communities with its developments, which will set world-class standards in modern living spaces. Lavik Estates is supported by HDFC Limited which will enable us to develop extraordinary levels of living.



"We would like to wish Lavik Estates all the best for the launch of their SHANTHI project in Coimbatore. I have known Laxman for many years now. I am confident that he and his team will put in all the effort required to make this premium residential building a success."

A stylized white signature of Mr. Deepak S. Parekh on a dark grey background.

MR. DEEPAK S. PAREKH  
Chairman of HDFC Limited



"We have known and been closely associated with Laxman Vaidya for more than three decades now. As Lavik Estates, his new company, embarks on its maiden residential project in Coimbatore we would like to congratulate him and wish them all success. I am sure this project will change the Coimbatore skyline and make all of us who have been associated with Laxman, very proud."

A stylized white signature of Gaj Singh II on a dark grey background.

GAJ SINGH II  
His Highness the Maharaja of Jodhpur



## LETTER FROM THE CEO

Dear Friends & Well-Wishers,

It gives me great pride to announce the launch of Lavik Shanthi, our first residential project in Coimbatore. From my past experience working at HDFC I have seen the best in class projects all over India and with this project I am taking my learning's to produce, what I believe will be a very special building in Coimbatore. We have left no detail untouched. Our passion is in the detail. The objective is to create an apartment like no other; that a family would love to come home to.

Our philosophy at Lavik Estates is "designing lifestyles". So it matters to us how the layout of an apartment is going to be. Will there be sunlight? Are the bedrooms going to be comfortable? Are the living rooms spaces well designed so that people would enjoy spending time there? Is the vastu perfect? Are the tiles of the best design and quality we can find? How will a housewife spend time in this apartment and where would she like to spend that time? All these questions and more was what kept us working late into the night so that we could come up with an apartment that will be timeless. Today, and even 30 years from now people will be happy to live here.

With that, I would like to say thank you for taking the time to read this and to think about Lavik Shanthi. If you have any questions please do not hesitate to either reach me or any of my colleagues. We would be more than happy to spend time with you.

We look forward to welcoming you!

With best regards,

**Laxman D. Vaidya**

[laxman.vaidya@lavik.in](mailto:laxman.vaidya@lavik.in)



//  
EVEN YEARS  
FROM NOW  
PEOPLE WILL BE  
HAPPY TO  
LIVE HERE.  
//



// LAVIK SHANTHI IS A  
11 STOREY LUXURIOUS  
RESIDENTIAL TOWER  
WITH AN EXQUISITE  
COLLECTION OF  
31 SPACIOUS 3 BHK  
APARTMENTS  
DESIGNED WITH  
THE MOST BEAUTIFUL  
SPECIFICATIONS AND  
FEATURES THAT  
RESONATES WITH  
QUALITY AND DESIGN. //



## DESTINATION COIMBATORE

Synonymous with great weather, elite education institutions and world-class companies, Coimbatore is one of India's fastest rising cities and welcomes families from all over the globe with its abundance of opportunity and progressive urban vibe.

Nestled near the Niligiri hills, the city of Coimbatore is built to amaze with the perfect balance of work, like and play.

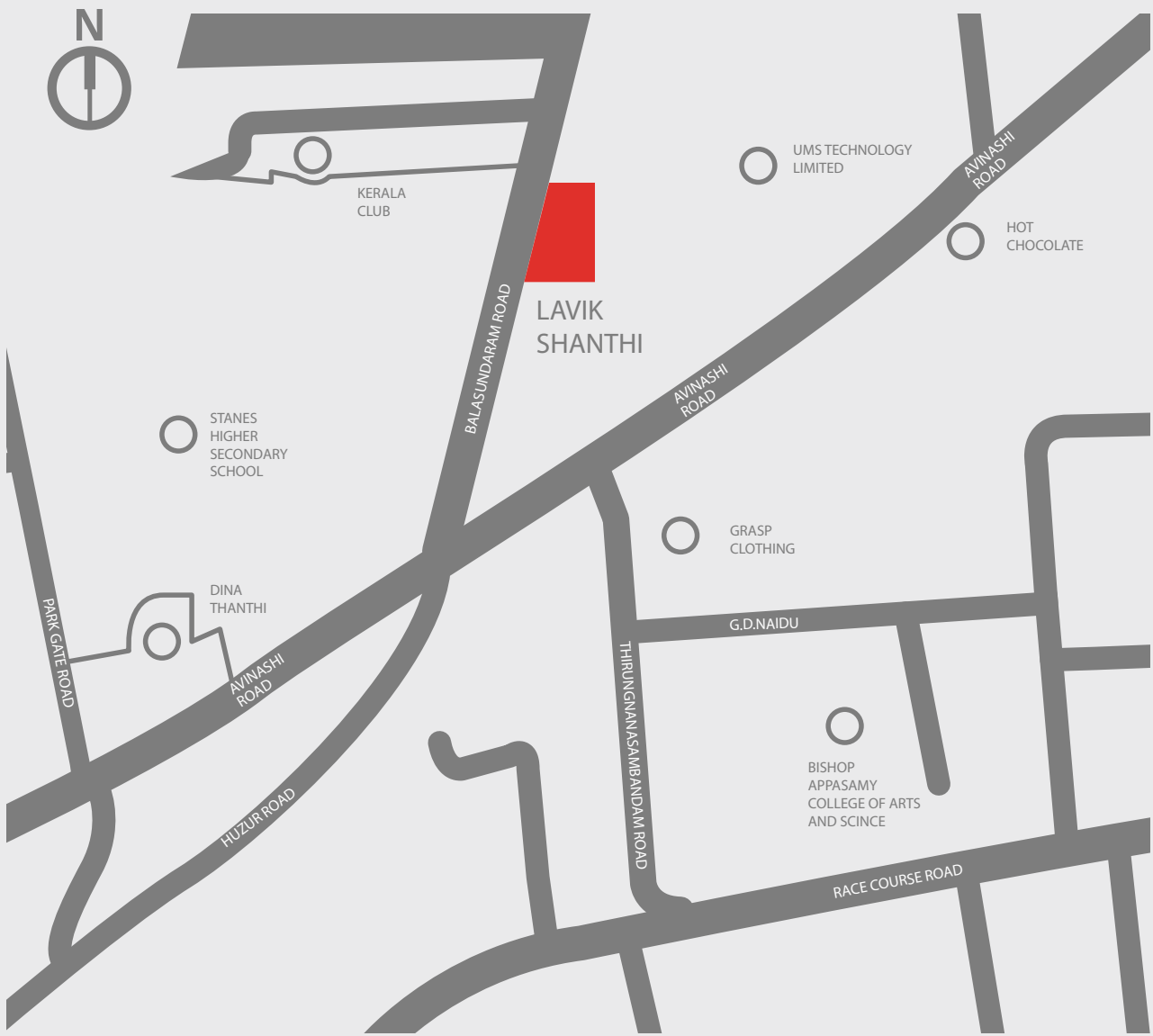
Coimbatore is famous for its excellent educational institutions like PSG College of Arts & Science; it's hospitals such as G.Kuppuswamny Naidu Memorial Hospital and the PSG Hospital. Hill Stations such as Ooty, Coonoor and Kodaikanal are in close proximity.



# CONVENIENT LIVING

- Railway Station - 1.5 Kms
- Airport - 10 Kms
- Taj Hotel - 2 Kms
- KG Hospital - 1 Kms
- GKNM Hospital - 1.5 Kms
- Residency Hotel - 1.5 Kms
- Fun Republic Mall - 5 kms
- Brookefields Mall - 3 kms
- Coimbatore Club - 3 kms
- Coimbatore Cosmopolitan Club - 2.1 kms
- P.S.G College of Technology - 4 kms

# LOCATION MAP



# SITE PLAN



# LOCATED FOR LIFE

Located centrally by the junction of Balasundaram Road and Avinashi Road, Lavik Shanthi is a Race Course Road property. It is located directly opposite the famous Stanes High School and is but a 5 minute walk to the famed and exclusive Race Course Road area, where one can enjoy an evening stroll; or step into a nice store and pick up one's groceries. The Taj Hotel and Residency Hotel are a few minutes away. With Avinashi Road being but a stone's throw away Lavik Shanthi offers convenient connections to other parts of the City.



# WELCOME TO LAVIK SHANTHI

where life is extraordinary

Lavik Shanthi, located in Balasundaram Road, strikes the perfect balance between tranquility and proximity. With its leafy emerald avenues spanning across half an acre, the secluded neighbourhood is far removed from the congested commuter zones, yet enjoys easy access to the city's other main business and leisure landmarks. Thanks to its convenient location. A new sanctuary, Lavik Shanthi will become a byword for the ultimate in luxury living.





## RELAX & REJUVENATE

With compelling teak wood doors and exquisite marbles on one-side, unwind yourself in the serenity of nature in our elegantly built terrace. Strike up a random conversation with people and establish a bond to cherish. Grab a seat by the well-lit fountain water and let go of your all day long stress. With amazing skyline just at your reach, catch the beauty of the stars while admiring the architectural excellence. When you are this relaxed, you also rejuvenate.



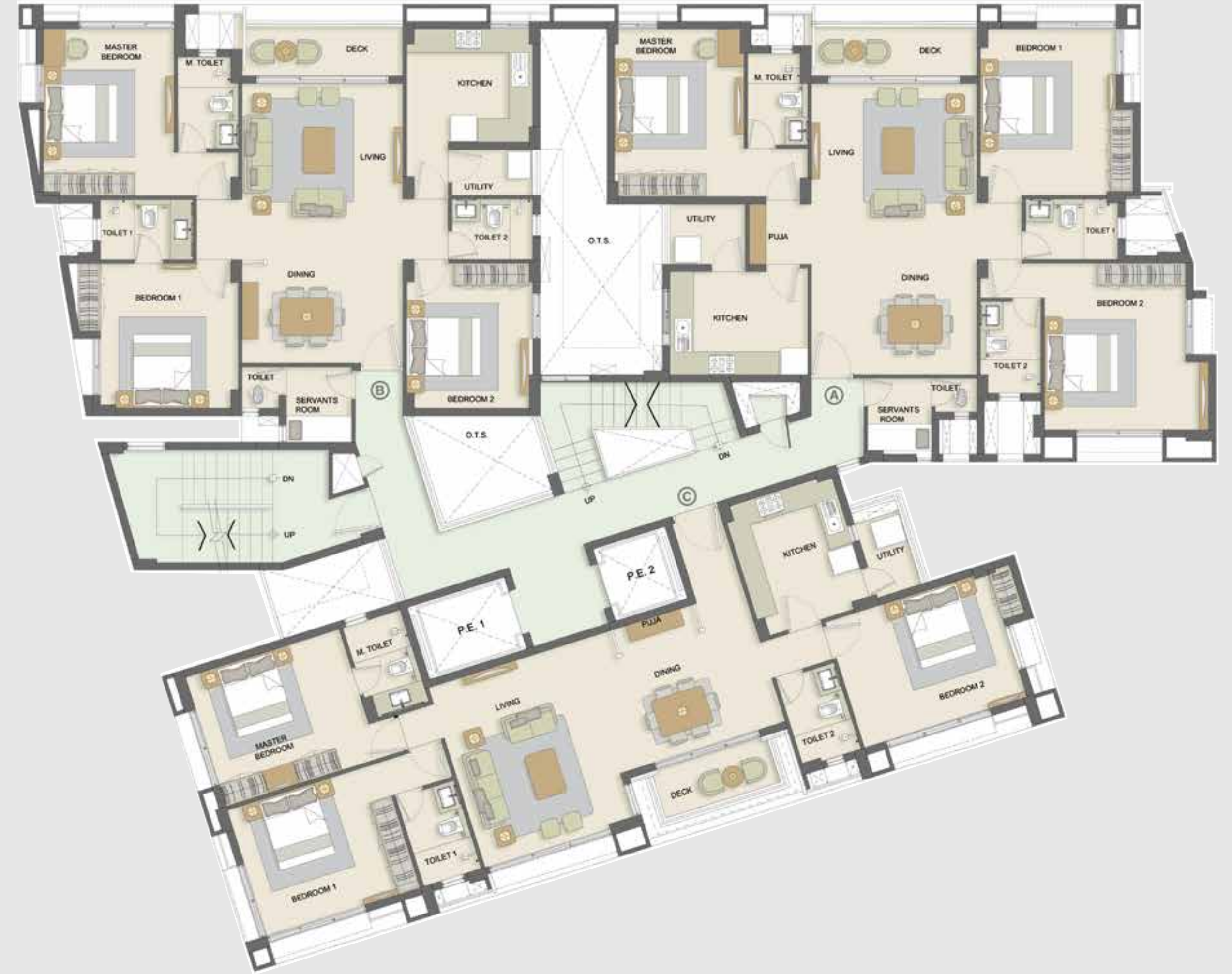
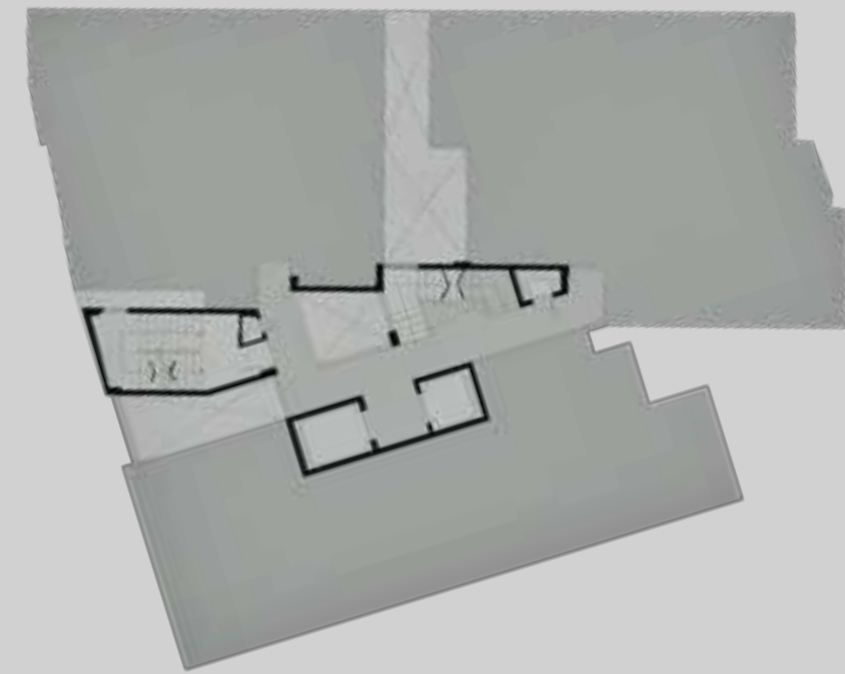




FLOOR PLANS



# TYPICAL FLOOR PLAN

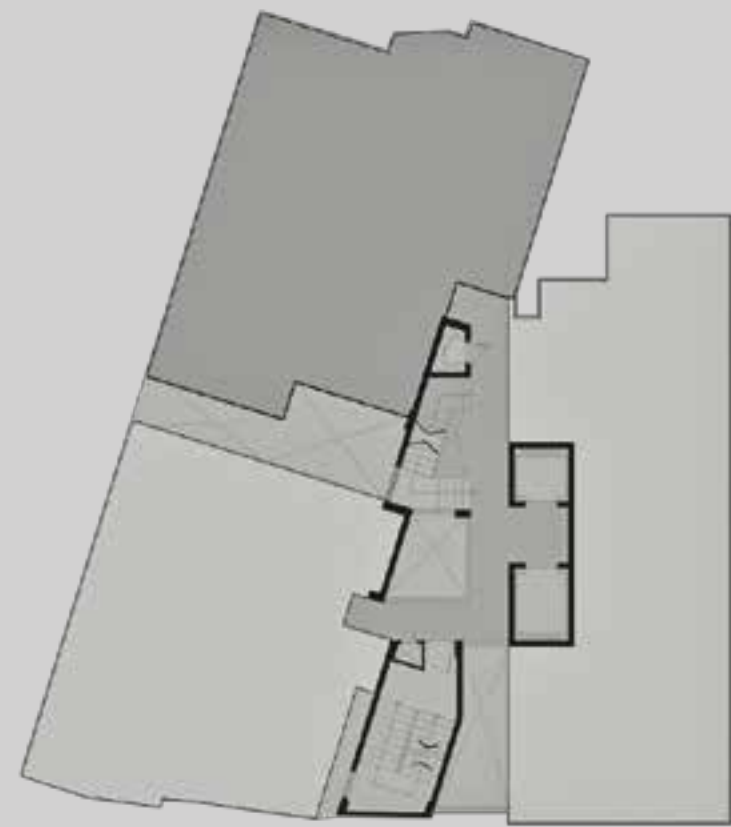




# APARTMENT A

Saleable Area

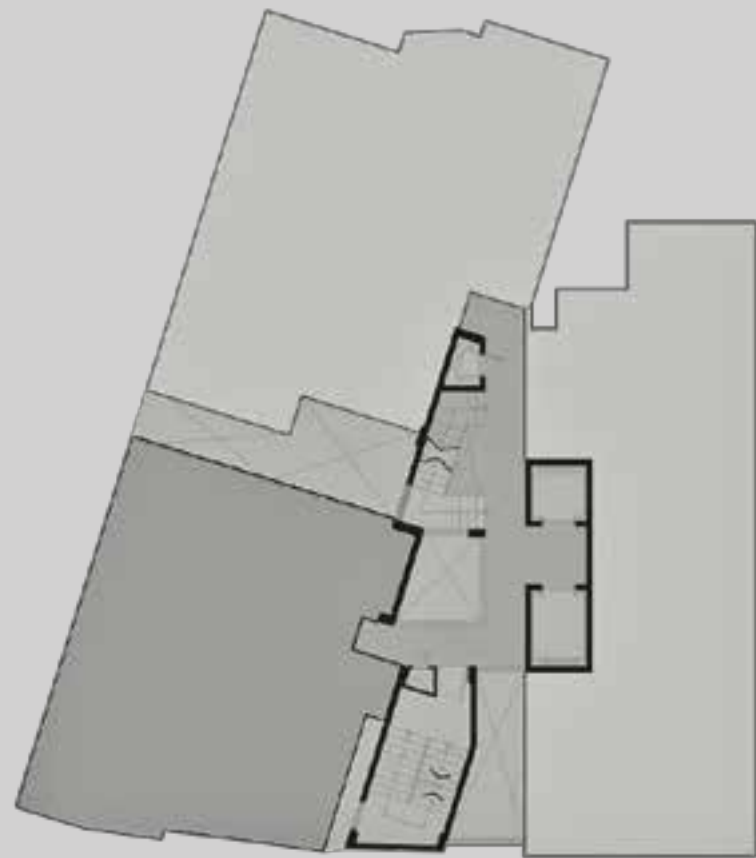
2017 sq.ft





## APARTMENT B

Saleable Area  
1859 sq.ft

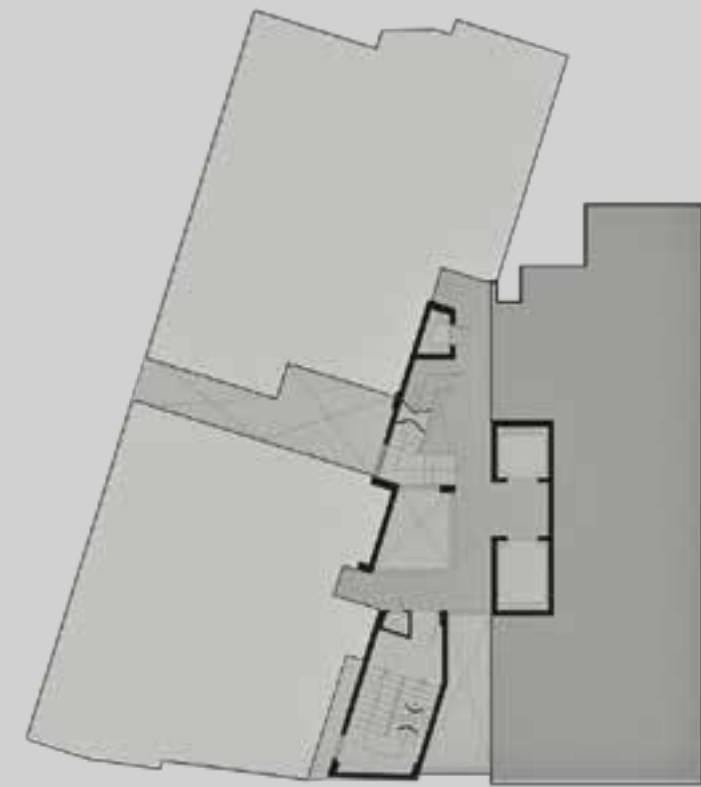




## APARTMENT C

Saleable Area

1979 sq.ft





## GENERAL AMENITIES

- Aesthetically designed building by architects Kapadia & Associates, Mumbai
- Designed with an emphasis on natural lighting and uninterrupted views
- Grand entrance lobby with premium finishes
- Full generator back-up
- 2 passenger lifts of 10 persons capacity and one is a stretcher lift
- Water and sewage treatment plants
- Covered car parking
- Seismic Zone III compliant RCC framed structure
- Internal & External walls as per structural norms
- Rainwater harvesting system
- Organic waste converter system
- Provision for two-wheeler parking

## COMMON AREA/FACADE

- Main entrance lobby as per design intent
- Exterior facade of decks as per design intent
- Clear glazed aluminium window with mosquito net
- Weather proof paint with textured finish on all external surfaces





## KITCHEN FEATURES

- Anti-skid tiles
- Pre-fitted kitchen cabinets
- Stainless steel sink and drain board
- Elegant granite platform in kitchen with ceramic tiled dado above the platform
- Exhaust fan provision
- Provision for water purifier and geyser
- Reticulated gas piped system

## BATHROOM FEATURES

- Master toilet to have imported marble
- Anti-skid vitrified tile flooring
- Superior quality sanitaryware of Toto or American standard or equivalent make and chrome-plated fixtures
- Shower cubicle in Master Toilet
- Exhaust fan provision



## APARTMENT FEATURES

- Elegant teak finished entrance door and internal doors, finished with veneer/laminate
- Living & dining room with imported marble
- Master bedroom with engineered wooden flooring and other bedrooms will have vitrified tiles
- Split ACs in living room, dining area and bedrooms
- Modular switches - Le Grande or equivalent
- Fire resistant electrical wires of reputed brand
- One earth leakage circuit breaker for each apartment
- Sufficient power outlets with concealed wiring and PVC insulated copper wires
- Light points and power sockets in kitchen for various appliances
- TV points in all bedrooms and living room
- Telephone points in all bedrooms, living, dining and kitchen
- Separate room with toilet for domestic help in Apartments A and B





**LAVIK** ESTATES

## CONTACT US

**Laxman Vaidya**  
CEO  
laxman.vaidya@lavik.in

**Gunjan Agarwal**  
VP - Corporate Marketing & Strategy  
gunjan@lavik.in

**Srihari Srinivasan**  
Manager - Public Relations  
srihari.srinivasan@lavikestates.com

**Nisha Mohan**  
Executive  
nisha@lavik.in

**Ravi Rangachari**  
Chief Project Officer  
ravi.rangachari@lavikestates.com

**Usha Shankar**  
AGM - Sales & Marketing  
usha.shankar@lavikestates.com

**Maheshbabu.S**  
Senior Executive - Public Relations  
mahesh.surathi@lavikestates.com

**Nagajothi Manickam**  
Executive - Accounts  
nagajothi@lavikestates.com